

Location and how to get to us

We are on Bearwood Road opposite Bearwood Primary School

Address Bearwood Chapel, 445a Bearwood Rd, Smethwick B66 7DH Tel 0121 420 1102

Contact details

Minister Pastor Dave Williams

Mobile Tel 07791 622122

Email Address dave@bearwoodchapel.org.uk

Website details with street view and google maps location
<http://www.bearwoodchapel.org.uk/find-us/map/>

Parking.

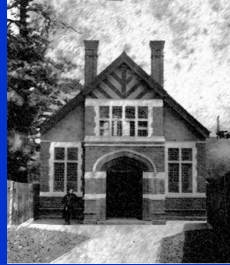
We provide parking spaces at the chapel for the elderly and those with disabilities.

Public Transport

Most bus stops are within 2 minutes walk, near the Bear Tavern on Bearwood Road.



Bearwood Chapel
1896



Work in DRC
Congo



"What's in a Motto"



All age congregation

Bearwood Chapel News and Views

Website
www.bearwoodchapel.org.uk

Who are we

Bearwood Chapel was founded in the late 19th century and was the first place of worship in Bearwood. Today it is home to a congregation of all ages and representing many different cultures. What we have in common is that we believe that God loves us and wants to have a personal relationship with each one of us. We exist to share this good news with others.

What do we do?

We have a range of weekly activities that include the following:

Activities for Children and Young People

- Friday Club 1, 6-7pm for kids aged 4-8
- Friday Club 2 7:15-8:15pm for kids 8-11
- Friday Club 3 8:30-9:30pm for young people 12-15
- 21CD is an opportunity for 11-18 year olds to meet together for games, quizzes and food. Each week we look at a particular topic and discover how the Bible is relevant to our own lives.

Sunday Morning Worship - 1030am

- Worship, teaching, communion.
- Creche facilities and children's activities are provided during the service

Ladies' Hour - Monday 1.30pm

- Teaching & Fellowship,

Toddlers Tues am 1030 and pm 1330

- Toys, toast and tea, toddler/baby required.

Home Groups - various nights

- Discussion, bible teaching and fellowship

Special Events

Go to our website to see what special Events we have coming up

www.bearwoodchapel.org.uk

“Seeking to show the love of Jesus.” (What’s in a motto?)

Most organisations have some form of motto, logo or mission statement that sums up in a phrase or sentence what their purpose is. For some time, Bearwood Chapel have used the phrase “Seeking to show the love of Jesus.” What do we mean by that?

Well recently, the elders had an away day where we tried to think about that question to help us prioritise what we should be doing as a church. There are after all lots of things that a group of 80+ people could be doing with their time, many of which would be good and beneficial to society. But what exactly is it that a church contributes?

If you want to know what the “love of Jesus” means then you need look no further than the gospels (the first four books of the New Testament). There you will find four carefully researched, historical accounts of Jesus’ life. There you meet somebody who cared deeply about people. He cared enough to heal people from all kinds of diseases and disabilities. He cared enough to set people free from demonic possession. He cared enough to tell them the truth about their lives calling them to repent from rebellion against God. Jesus’ love was no weak, wish washy affair. It wasn’t the sentimental stuff of Valentine’s day. Jesus love was powerful and effective. It brought hope, healing and freedom. So, one of the things we said that we were here for as a church is “to help damaged people find repair and rehabilitation.” That’s a vivid description that is obviously true of many people in our community. People whose lives have been blighted by abuse, hatred and harm. The good news is that if such a description rings true for you then Jesus cares about you.

Many of us don’t instantly identify with that description though do we? We don’t feel particularly damaged or messed up. However, that is exactly how the Bible describes every one of us. It says that we are damaged by sin because it separates us from God. Sin is far more damaging than any illness; in fact the Bible says that because of sin we are spiritually “dead” because we lack a right relationship with God.

So the love of Jesus did not stop at him healing, casting out demons or speaking truth, amazing though those things are. Because our deepest problem is the spiritual death that sin brings and the future penalty of eternal separation from God in Hell, Jesus did something else, he died. Jesus’ death on the cross wasn’t a mistake, wasn’t a victim’s failure, it was the greatest act of love in history. By his death, he took our place, received the penalty that we deserve for rebelling against God and broke the power of evil.